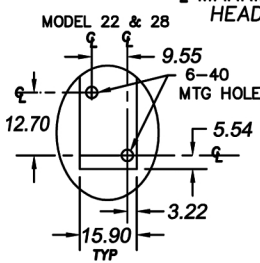
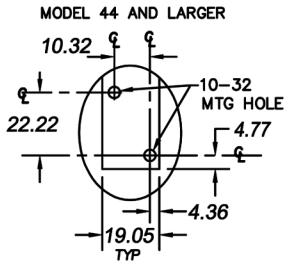
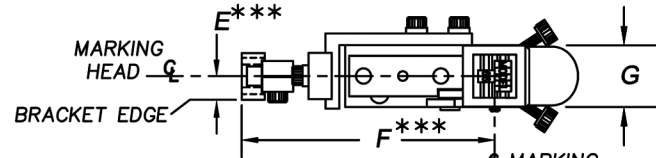


AIR CYLINDER
PORTS ARE 10-32
FACTORY ORDERED FLOW
CONTROLS ACCOMMODATE
EITHER 6mm OR
1/4" O.D. TUBE

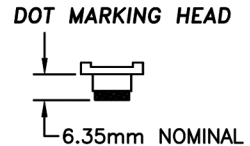
BOTTOM
MTG HOLE
D***



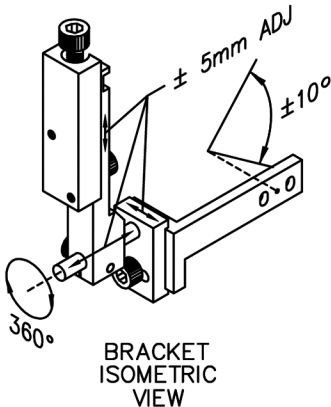
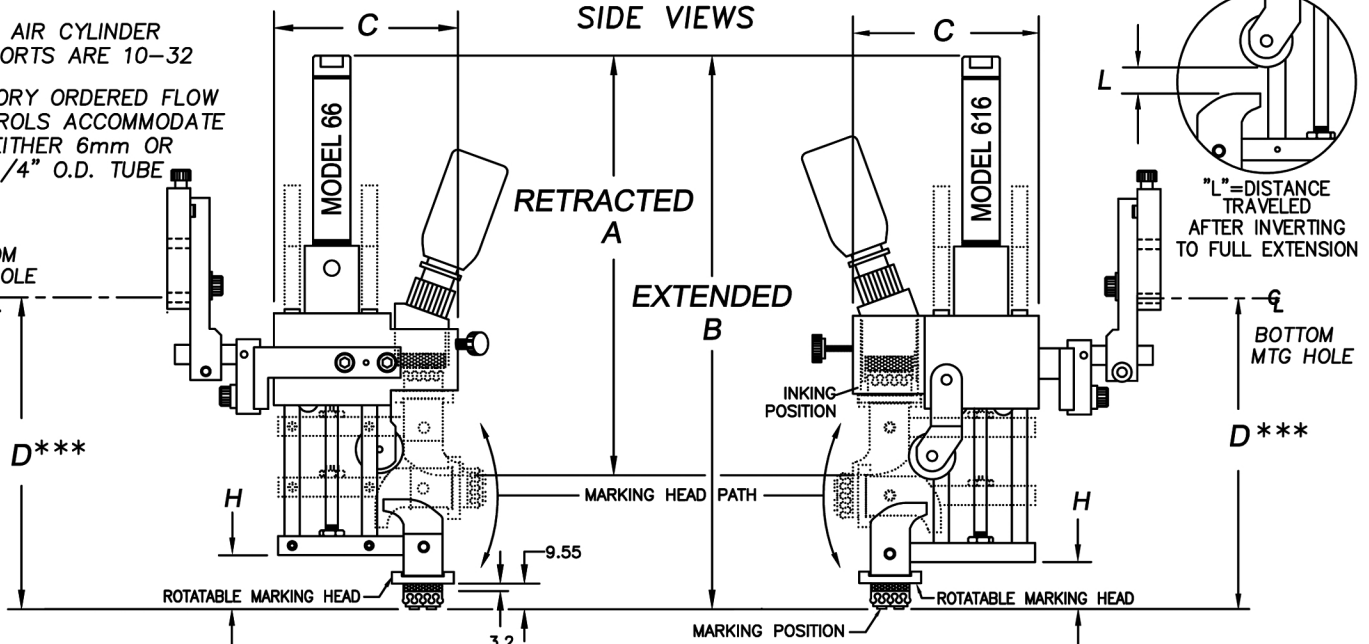
BOTTOM VIEWS

DIMENSIONS IN MILLIMETERS

MODEL 66 & 616 SHOWN ABOVE
FOR ILLUSTRATIVE PURPOSES



SIDE VIEWS



BRACKET ISOMETRIC VIEW

DIMENSIONAL CHARACTERISTICS (IN MILLIMETERS)									
MODEL	22	28	44	66	88	1010	416	616	816
LINES OF TYPE *	DOT MARKER	1	1	2	3	4	1	2	3
DIM.									
A	115.87	115.87	158.75	187.32	187.32	187.32	158.75	187.32	187.32
B	152.40	152.40**	212.73**	238.13	238.13	238.13	212.73**	238.13	238.13
C	50.80	50.80	60.33	76.20	84.13	90.47	60.33	76.20	85.73
D	90.47	90.47**	127.00**	127.00	127.00	127.00	127.00**	127.00	127.00
E	7.91	7.91	9.52	9.52	9.52	9.52	9.52	9.52	9.52
F	76.20	76.20	92.10	103.18	106.35	109.52	98.43	109.52	112.70
G	15.88	34.92	19.05	25.40	34.92	41.28	63.50	63.50	63.50
H	14.28	14.28**	17.46**	20.63	20.63	20.63	17.46**	20.63	20.63
L	4.00	4.00	12.70	12.70	12.70	12.70	12.70	12.70	12.70

NOTE:
ALL DIMENSIONS ARE NOMINAL AND SUBJECT TO STANDARD MANUFACTURING/ASSEMBLY TOLERANCES
* TWO TIE KNOTS RUBBER TYPE
** ASSUMES TYPE HOLDER / TYPE USED (NO RUBBER CUSHION)
*** DIMENSION IS NOMINAL TO CENTER OF ADJUSTMENT RANGE FOR EACH AXIS
COPYRIGHT © 2002-2011, SPRINTER MARKING, INC. ALL RIGHTS RESERVED.