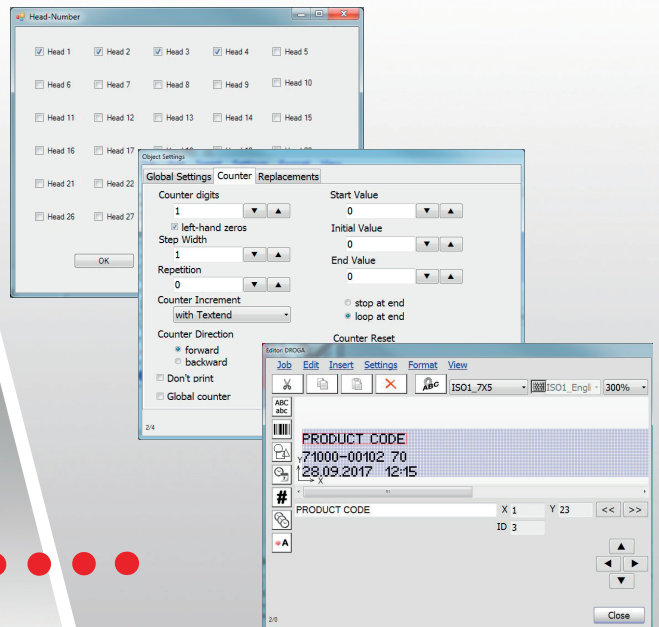


# LEIBINGER



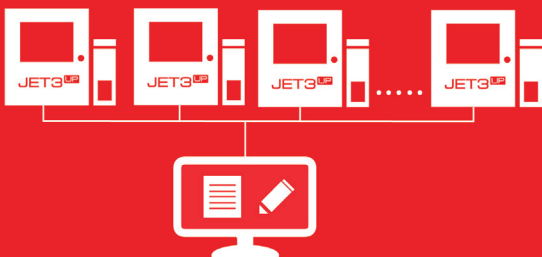
## Creating print layouts on a computer



LEIBINGER computer software  
for creating print jobs

# JETedit3

**Local Distributor:**



REDEMAC  
3540 Griffith St, Saint-Laurent,  
Quebec H4T 1A7  
Phone: (514) 335-9570  
[www.redemac.com](http://www.redemac.com)  
[request@redemac.com](mailto:request@redemac.com)



## CONVENIENT PRODUCTION PLANNING ON A COMPUTER

JETedit3 is a powerful tool for optimizing your print jobs. LEIBINGER's JETedit3 add-on software makes it really easy and convenient to create print jobs for the JET3up series of inkjet printers using a computer. To do so, the user selects the printers from the menu to which the print job shall be sent. Then the Explorer is used to send the print data via Ethernet or a serial COM port directly from the computer to the connected JET3up inkjet printer. Data transfer via a USB stick or SD card is entirely unnecessary.

## MANAGING MULTIPLE PRINT JOBS

JETedit3 enables you to manage multiple print jobs on a computer simultaneously. You can import, create, save or copy print jobs in your usual computer environment. Parameters such as print delay, font width, shaft encoder settings and date change can be configured with just a few clicks. JETedit3 provides all functions, such as counters, date and time display, and shift codes. In addition to graphics, texts as well as 1D and 2D barcodes can be transmitted. To make the software fast and easy to operate, the integrated editor for creating graphics precisely matches the graphics editor of the inkjet printers.

## COPYING PRINT JOBS

The individual settings for print jobs, including text and graphics, can be quickly and easily transferred from one JET3up printer to another using JETedit3.

## WINDOWS -BASED INTERFACE

The menu guidance of JETedit3 has been adapted to the Windows interface so that print jobs and graphics can be created and edited intuitively. The user-friendly job editor corresponds to the editor of the LEIBINGER inkjet printer, making its design just as easy to understand.

## DATA BACKUP

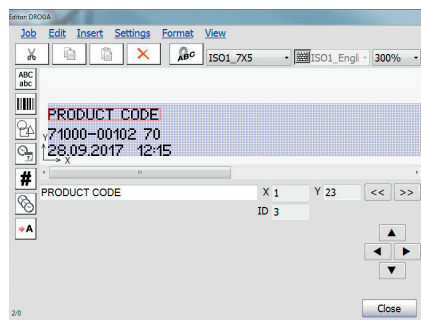
JETedit3 can also be used as a centralized data backup. All of the data used can be securely saved and reliably archived on the computer.

### System requirements

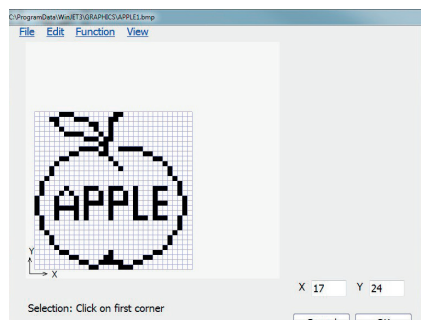
- » Operating system: Windows XP Prof., Windows 7, 8 or 10
- » At least 200MB of available hard-disc storage
- » At least 200MB of available RAM storage
- » Graphics card with a resolution of at least 1024x768 pixels
- » Network connection (LAN) or one serial COM port (such as RS232) for each JET3up printer

## Good reasons for LEIBINGER JETedit3

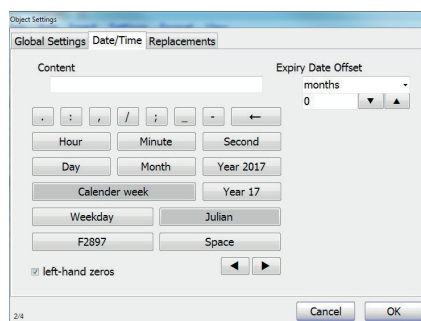
- » Create jobs easily on the computer and send them to the printer
- » Copy print jobs easily from one printer to another
- » Manage multiple print jobs simultaneously
- » Data backup



Integrated text editor.



Integrated graphics editor.



Automatic date change / configure expiration dates.



Paul Leibinger GmbH & Co. KG  
Daimlerstr. 14 | D-78532 Tuttlingen  
Tel. +49 (0)7461 9286-0  
Fax +49 (0)7461 9286-199

[www.leibinger-group.com](http://www.leibinger-group.com)  
[info@leibinger-group.com](mailto:info@leibinger-group.com)



### LOCAL DISTRIBUTOR CONTACT:

REDEMAC  
3540 Griffith St, Saint-Laurent,  
Quebec H4T 1A7  
Phone: (514) 335-9570  
[www.redemac.com](http://www.redemac.com)  
[request@redemac.com](mailto:request@redemac.com)