


E-Series version 3.0 upgrade steps

Note:  Inkjet : It is a system folder automatically generated after identified by printer. It is not created manually. To guarantee successful upgrade, all upgrade files need to put in the corresponding root directory in the USB.

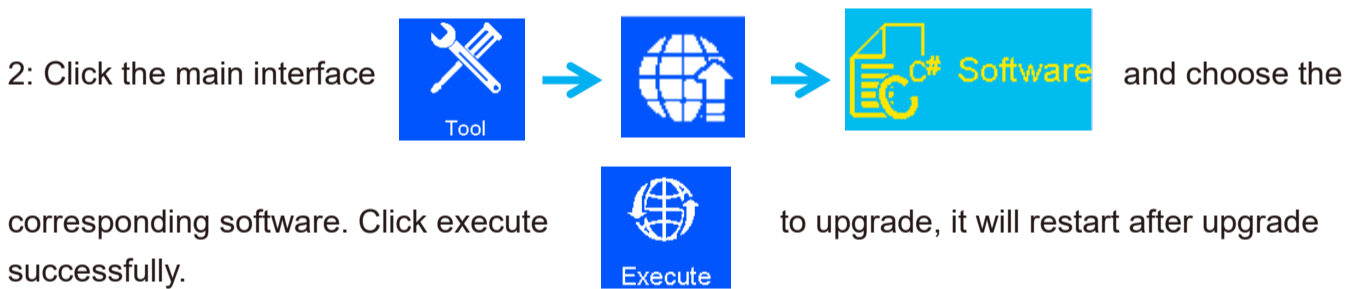
Notice before upgrading: (please be sure to read the following steps before upgrading)

1. Please backup the msgs before upgrading the version, to avoid the msg loss caused by the different system
2. Please reset the system after you backup. Click tool and select “reset” in the lower left corner. Default password is 888888. The interface will be in English after reset. Please upgrade in English interface.(see video for details)
3. After upgrading to the new 3.0 version, it can't upgrade to the old version, and the upgrade time becomes longer, which takes about 5min.
4. Please don't power off or unplug the USB when upgrade.
5. Upgrade from .0 version to .1 version requires the corresponding software. Upgrade from .1 version to .1 version requires the ENew.3.0.1.13037.pak file.

I. Software upgrade

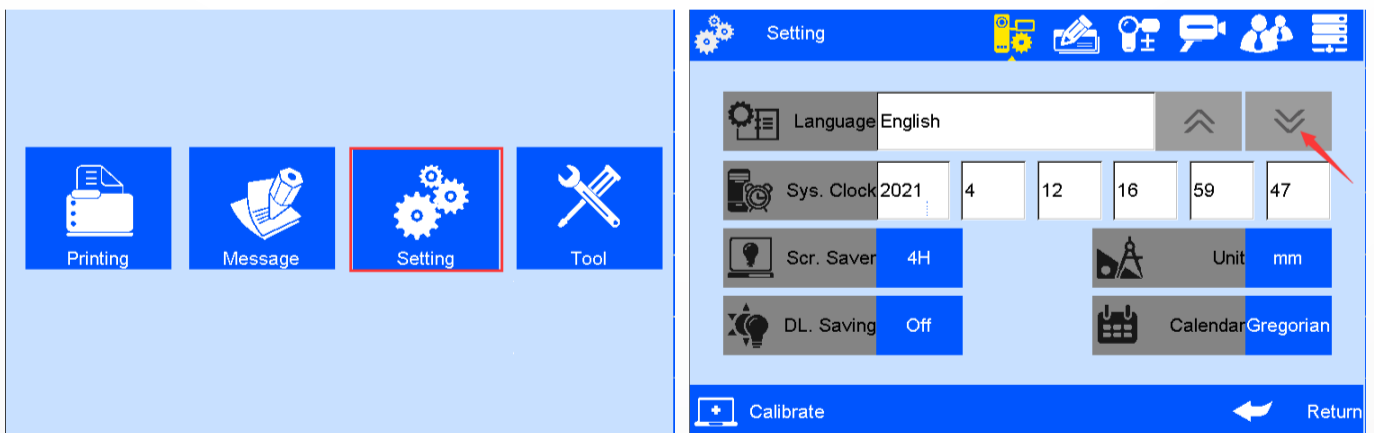
(E-Series software use suffix .pak, use E1S as an example)

1: Put the upgrade file E1S.3.0.1.13037.pak into USB folder Inkjet-Upgrade-Application.



II. Change English to other language

1: Click Setting.



Click the red arrow to select language, and then click return. After restart, the interface will be displayed.

Please check the new 3.0 version logo:

