

DYNACODE II

Perfection in packaging printing.



Dynacode II – the further advancement of a successful series.

With our established Dynacode series, we set new standards for the printing of foil packaging. The keyword here is flexibility: mode, speed, print resolution, installation position - there are no limits regarding the wishes and needs of our customers. Therefore our new product line Dynacode II is nothing other than the logical continuation of a success story. Below we will show you all operating modes and product components of the system.

> Continuous mode

When printing continuously the printhead stands still while the packaging foil is guided through. Printing takes place during the operation of packaging machine.

> Intermittent mode

When printing intermittently the printhead moves over the foil in order to move back to initial position. Printing takes place while the machine is at a short standstill, frequently while packaging is being filled.



Control unit

The control unit of the Dynacode II features an intuitive user interface with icon buttons and a 7" colour touch-screen display with preview for verifying the layout. This makes it very easy to keep control over the print configuration.



Bracket system

Our bracket systems permit an uncomplicated integration in your packaging line. The newly positioned return pulleys and the registration unit which can be mounted on all sides, offer a broad scope of variation of the foil run.



Left and right version

Again for Dynacode II we offer the bracket systems as a left-mounted and right-mounted variant. Horizontal and vertical mounting is virtually unlimited: maximum flexibility.

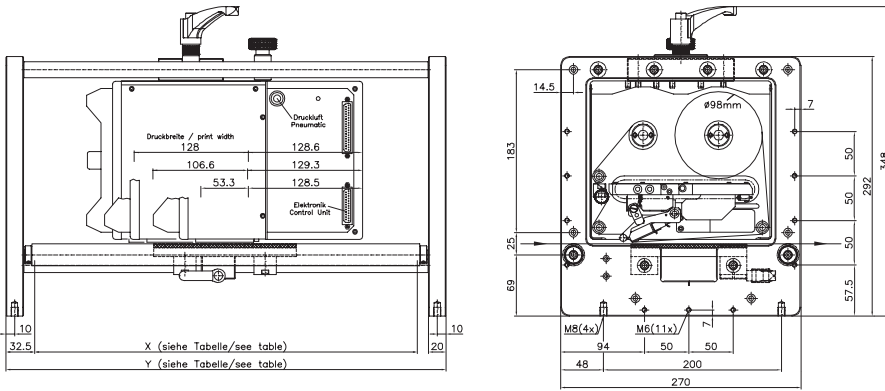


IP version

The splash-proof version offers additional protection in harsh production environments. During the cleaning process neither print module nor control unit must be dismantled or covered. The cleaning cassette necessary for this can simply replace the ribbon cassette within seconds. The IP version is not available with touch-screen display.

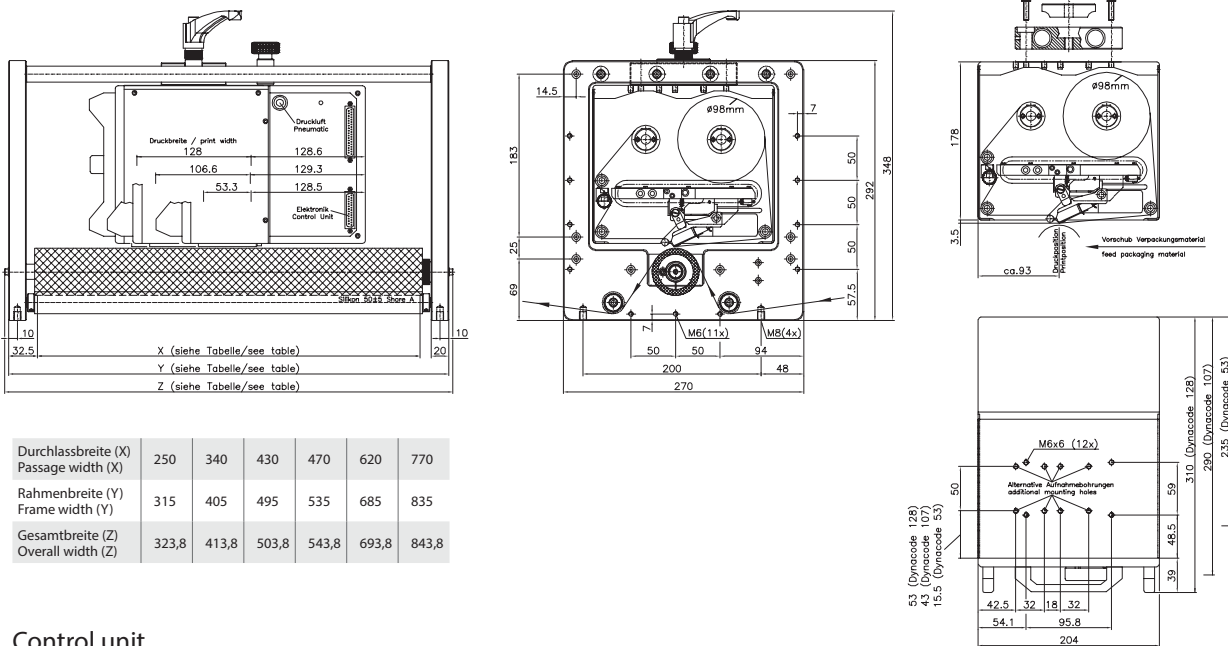
| | Dynacode II 53 | Dynacode II 107 | Dynacode II 128 |
|--|--|--|--|
| Printing | | | |
| Print width | max 53.3 mm | max 106.6 mm | max 128 mm |
| Print length continuous mode intermittent mode | 6000 mm 75 mm | 3000 mm 75 mm | 3000 mm 75 mm |
| Print speed continuous mode intermittent mode | 50 ... 800 mm/s 50 ... 600 mm/s | 50 ... 600 mm/s 50 ... 600 mm/s | 50 ... 600 mm/s 50 ... 450 mm/s |
| Back speed | intermittent mode only: max 800 mm/s | | |
| Passage width bracket system | customized | | |
| Resolution | 300 dpi | 300 dpi | 300 dpi |
| Printhead | Corner Type | Corner Type | Corner Type |
| Dimensions (width x height x depth) | | | |
| Print mechanics without bracket system with bracket system | 204 x 182 x 235 mm dependent on passage width | 204 x 182 x 290 mm dependent on passage width | 204 x 182 x 310 mm dependent on passage width |
| Control unit | 251 x 96 x 207 mm | 251 x 96 x 207 mm | 251 x 96 x 207 mm |
| Connecting cables to mechanics | 2.5 m | 2.5 m | 2.5 m |
| Weight | | | |
| Print mechanics | 9.5 kg | 11 kg | 11.7 kg |
| Electronics with cable | 5.5 kg | 5.5 kg | 5.5 kg |
| Acoustic Emission (distance 1 m) | | | |
| Average sound power level | 60 dB(A) | 65 dB(A) | 68 dB(A) |
| Transfer Ribbons | | | |
| Ink | outside/inside (option) | outside/inside (option) | outside/inside (option) |
| Roll diameter | max 98 mm | max 82 mm | max 75 mm |
| Core diameter | 25.4 mm / 1" | 25.4 mm / 1" | 25.4 mm / 1" |
| Length | max 900 m | max 600 m | max 450 m |
| Interfaces | | | |
| Serial | RS-232C (max 115,200 baud) | | |
| USB | 2.0 High Speed Slave | | |
| Ethernet | 10/100 Base T, LPD, RawIP-Printing, DHCP, HTTP, FTP | | |
| 2 x USB Master | connection for external USB keyboard and memory stick | | |
| Connection Values | | | |
| Pneumatic connection | 6 bar dry and oil-free | | |
| Nominal voltage | 110 ... 230 V AC / 50 ... 60 Hz | | |
| Nominal current | 230 V AC / 1.5 A – 110 V AC / 3 A | | |
| Fuse values | 2x T4A 250 V | | |
| Operating Conditions | | | |
| Temperature | 5 ... 40 °C | | |
| Relative humidity | max 80 % (non-condensing) | | |
| Fonts | | | |
| Font types | 6 bitmap fonts 8 vector fonts/TrueType fonts 6 proportional fonts more fonts on demand | | |
| Character sets | Windows 1250 to 1257, DOS 437, 850, 852, 857 all West and East European, Latin, Cyrillic, Greek and Arabic characters are supported / more character sets on demand | | |
| Bitmap fonts | size in width and height 0.8 – 5.6 zoom 2 – 9 orientation 0°, 90°, 180°, 270° | | |
| Vector fonts/TrueType fonts | 6 BITSTREAM® fonts size in width and height 1 – 99 mm variable zoom orientation 360° in steps of 90° | | |
| Font attributes | dependent on font type – bold, italic, inverse, vertical | | |
| Character spacing | variable | | |
| Bar Codes | | | |
| 1D bar codes | CODABAR, Code 128, Code 2/5 interleaved, Code 39, Code 39 extended, Code 93, EAN 13, EAN 8, EAN ADD ON, GS1-128, Identcode, ITF 14, Leitcode, Pharmacode, PZN 7 Code, PZN 8 Code, UPC-A, UPC-E | | |
| 2D bar codes | Aztec Code, CODABLOCK F, DataMatrix, GS1 DataMatrix, MAXICODE, PDF 417, QR Code | | |
| GS1 bar codes | GS1 DataBar Expanded, GS1 DataBar Limited, GS1 DataBar Omnidirectional, GS1 DataBar Stacked, GS1 DataBar Stacked Omnidirectional, GS1 DataBar Truncated | | |
| | all bar codes are variable in height, module width and ratio orientation 0°, 90°, 180°, 270° check digit and human readable line optional. | | |

Right version . Intermittent mode



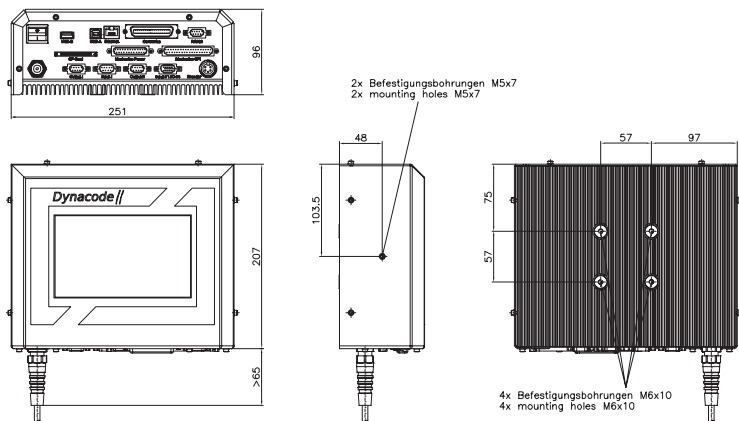
| | | | | | | |
|--|-----|-----|-----|-----|-----|-----|
| Durchlassbreite (X) Passage width (X) | 250 | 340 | 430 | 470 | 620 | 770 |
| Rahmenbreite (Y) Frame width (Y) | 315 | 405 | 495 | 535 | 685 | 835 |

Right version . Continuous mode



| | | | | | | |
|--|-------|-------|-------|-------|-------|-------|
| Durchlassbreite (X) Passage width (X) | 250 | 340 | 430 | 470 | 620 | 770 |
| Rahmenbreite (Y) Frame width (Y) | 315 | 405 | 495 | 535 | 685 | 835 |
| Gesamtbreite (Z) Overall width (Z) | 323,8 | 413,8 | 503,8 | 543,8 | 693,8 | 843,8 |

Control unit



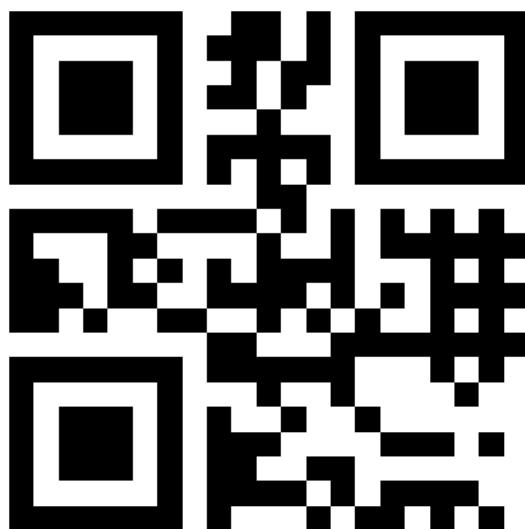
- Dynacode II is as well available as left version (mirrored)
- all measurements in mm
- subject to technical changes



DYNACODE II

efficient . flexible . fast

- > Intermittent and continuous mode freely selectable
- > Left and right version available
- > Up to 900 m transfer ribbon for long production running times
- > Display of remaining transfer ribbon for quick ribbon changes
- > Optimal transfer ribbon usage
- > All common interfaces for fast data exchange
- > Minimum of wear parts
- > Intuitive graphical user interface with icon buttons
- > WYSIWYG display with preview for verifying the layout
- > 7" touch-screen colour display



REDEMAC
3540 Griffith St, Saint-Laurent, Quebec H4T 1A7
Phone: (888) 335-9570

www.redemac.com
request@redemac.com

