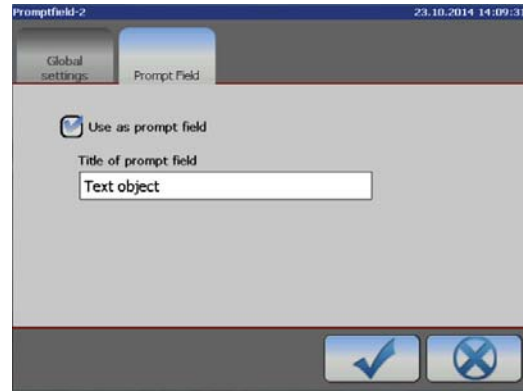


< Prompt Field > settings

Checking this box opens a text entry field to assign a name to the **< Prompt Field >**. Prompt fields have to be named for a better handling in case you are working with more than one **< Prompt Field >**.



< Prompt Field > tab in the < Object settings >

Maximum number of < Prompt Fields >

The number of **< Prompt Fields >** within a print job is **limited to 2 Prompt Fields per printjob**

In the JET2neo editor the **< Prompt Field >** is displayed in an orange color and it shows the current content



< Prompt Fields > in the job editor

With the "Show prompt" button you can open a dialog box for changing the content

The **< Prompt Fields >** in the WYSIWYG window of the main menu. You can see the field itself with the current content and a button labelled "Show prompt".



The **< Prompt Field >** button in the WYSIWYG window

The button "Show prompt" opens a dialog box that shows a list of all <Prompt fields> of the current print job with the respective contents.

It is also possible to change the current content of each <Prompt field>.

All changes have to be confirmed with the OK button.

Changes will be showed immediately in the WYSIWYG window.

The same dialog box will show up when you open a job with <Prompt fields>.

Dialog box of the <Prompt field>

Overview Settings and Changes

First time settings are made in the respective object settings menus

Text object

For the first time the content of the text object is set directly in the JET2neo editor. **This first setting defines the maximum length of an input! It is possible to use blanks.**

Date object (Expiry date)

The content of a date object is set in the object settings for the first time. The value that can be changed using the <Prompt Field> is the <Expiry Date Offset>

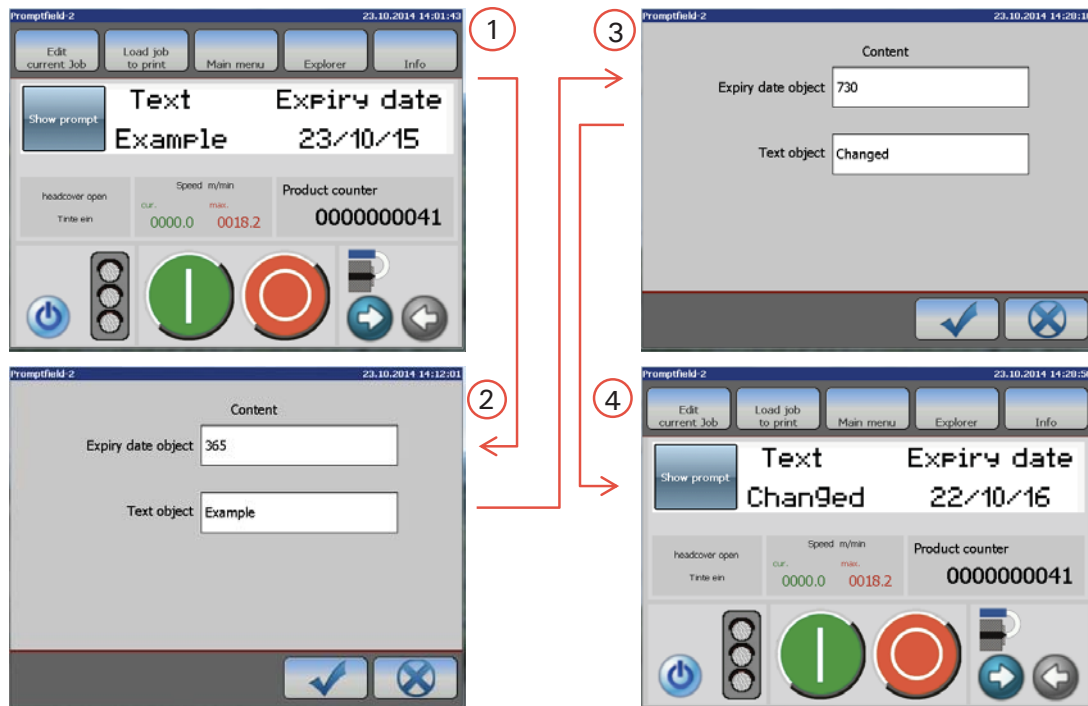
Counter object 1

The content and the format of a counter is set in the object settings for the first time.

Counter object 2

The value that can be changed using the <Prompt field> is the <Initial value>

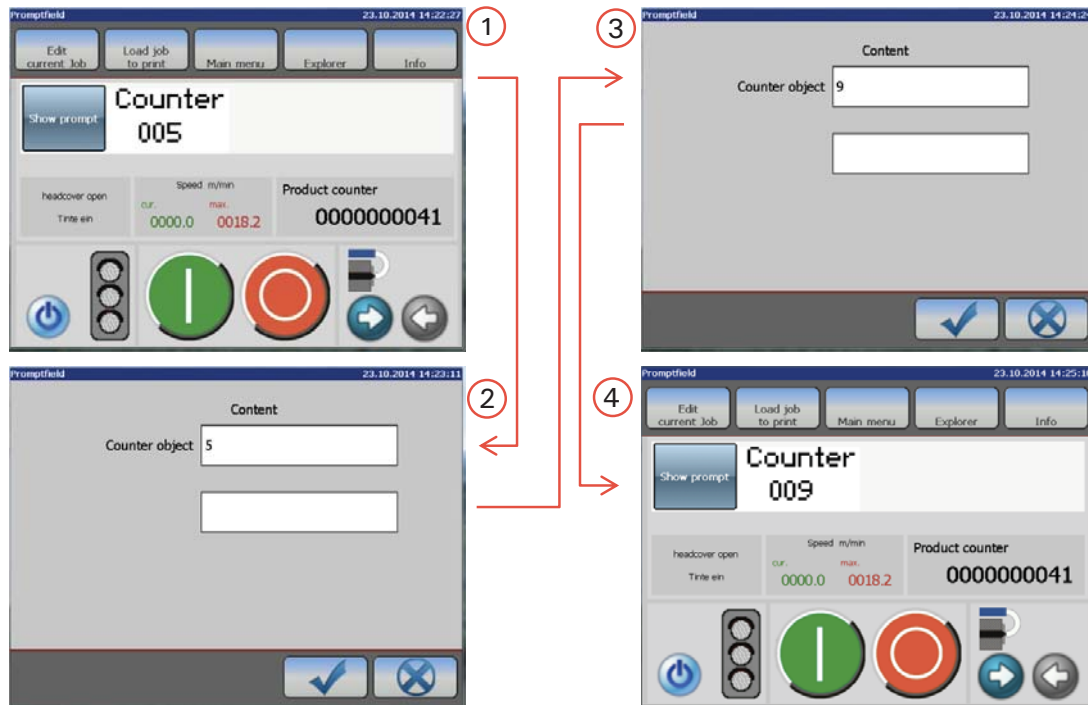
Using the <Prompt field> for inputs- Text and date objects



WYSIWYG Window and <Prompt Field> properties with the first time settings.

WYSIWYG Window and <Prompt Field> properties with the new settings

New settings made by using the <Prompt field> - Counter objects



WYSIWYG Window and <Prompt Field> properties with the first time settings.

WYSIWYG Window and <Prompt Field> properties with the new settings

All changes can be made in one dialog box without entering the JET2neo editor!